



**CUMBRIA**  
COMMUNITY FOUNDATION

# West Cumbria: Opportunities and Challenges

*Community Needs Report*



Cumbria Community Foundation exists to alleviate poverty and disadvantage and to strengthen Cumbria's communities by making life-changing grants and promoting philanthropy.

We provide philanthropic services to individuals, families and organisations.

- Created in 1999 with £1m founding donation from BNFL.
- In the last 8 years our West Cumbria Grants Panel has awarded grants totalling over £5m to more than 820 community projects and 360 individuals.
- Manage over 90 grantmaking funds on behalf of individuals, families and businesses.
- Work in partnership (e.g. Cumbria Exchange).
- Provide opportunities for financial leverage and match funding.

# West Cumbria: Opportunities and Challenges 2019

A community needs report  
commissioned by Sellafield Ltd



February 2019

 **CUMBRIA**  
COMMUNITY FOUNDATION

## Key Themes:

- Growing Up
- Living & Working
- Ageing
- Housing & Homelessness
- Fuel Poverty
- Debt
- Transport & Access to Services
- Healthy Living
- Safe Communities
- Strong Communities

WEST CUMBRIA IN PROFILE: OPPORTUNITIES



Allerdale has nearly 6% more active people and over 20% less inactive adults than England as a whole

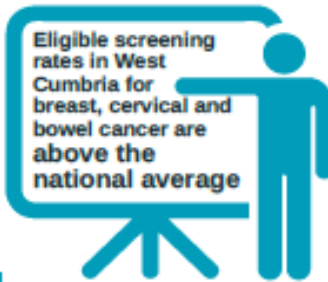


Copeland has a higher proportion of micro-businesses than the national average

Allerdale has a higher rate of female employment than the average



Older people have a better quality of life than the national average



Eligible screening rates in West Cumbria for breast, cervical and bowel cancer are above the national average



There are more 16-17 year olds in training, education and employment than the national average



Manufacturing and construction contributes £1.6 billion to West Cumbria's Gross Value Added

87 primary and 9 secondary schools rated outstanding or good



Allerdale has 2% higher rate of employment than England's average



25% less hospital admissions due to falls in people aged 65 years and over

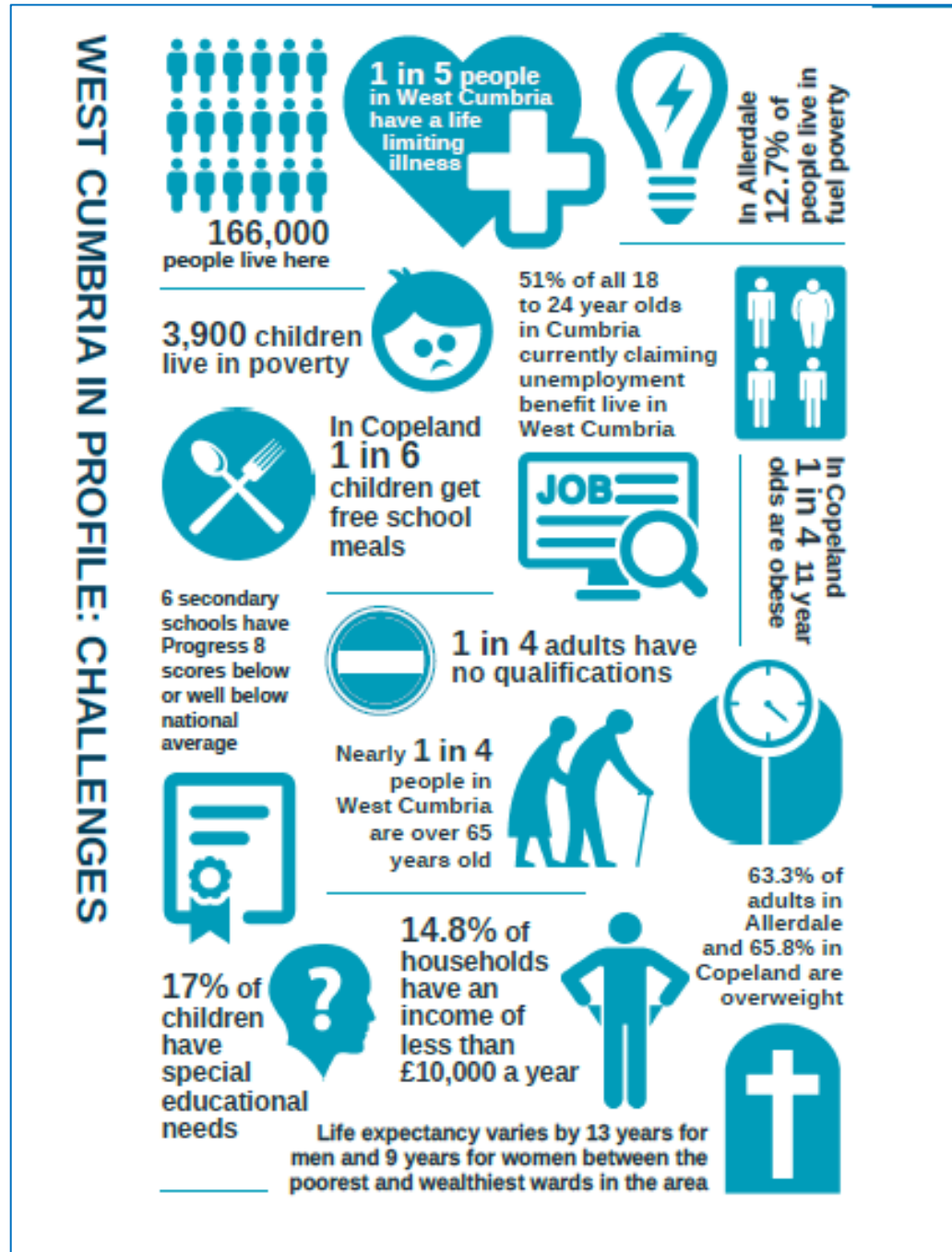


5 secondary schools have above national average number of pupils achieving Grade 5 or above in GCSE English and Maths

## Opportunities:

- Centre of Nuclear Excellence
- World leading research & development facilities
- Innovative & world leading businesses
- High quality training providers
- Many good & outstanding schools
- Outstanding cultural heritage & landscape
- One of the safest places to live in the UK
- Strong local communities & thriving third sector

# Challenges:





# Examples of organisations and projects already addressing some of the issues:

## BECBC BUSINESS AND SCHOOLS PROJECT

When students meet employers in school, their chances of becoming NEET are greatly reduced. They have a better understanding of the local labour market and are able to make more informed career decisions.



## MEN IN SHEDS COMBATING SOCIAL ISOLATION



## PHOENIX YOUTH PROJECT: ROLE MODEL SCHEME

The Phoenix Youth Project runs community-based youth activities for young people who live in some of the most disadvantaged parts of Copeland.



## EWANRIGG LOCAL TRUST: WE WILL PROJECT

Record numbers of children are being referred to mental health services. However, in Cumbria many young people often wait up to nine months or longer to get this vital help.



## HOME TO WORK: SUPPORTING THE UNEMPLOYED



## FIT 4 LIFE WEST CUMBRIA





## Developing Programmes & How You Can Get Involved...

### **Growing Up:**

- Early Help (child poverty) – family focussed support
- #iwill Fund – promoting youth social action
- ‘Positive Disruptors (Copeland)’ – encouraging youth enterprise & innovation

### **Living & Working:**

- Into Employment – focussed support

### **Debt:**

- Financial Wellbeing – addressing debt issues & supporting financial understanding



To find  
out more.....

## Contact:

Dr Jenny Benson, Philanthropy Officer

Email: [jenny@cumbriafoundation.org](mailto:jenny@cumbriafoundation.org)

Tel: 01900 825760

[www.cumbriafoundation.org](http://www.cumbriafoundation.org)